

material:

BS EN 1562 - Malleable Iron

Threads:

BSPT

Sizes Available:

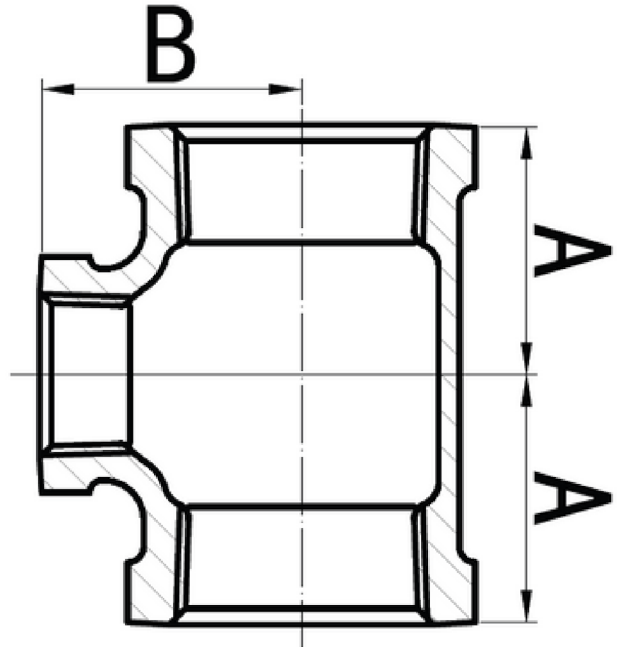
1/8" - 6"

Working Pressure:

PN16



FQ CODE	SIZE Inch	SIZE	Dimensions A (mm)	Dimensions B (mm)
GMTR886	1/4 x 1/8	8 x 6	18.5	19
GMTR10108	3/8 x 1/4	10 x 8	22	22.5
GMTR15156	1/2 x 1/8	15 x 6	22	23
GMTR15158	1/2 x 1/4	15 x 8	24	24
GMTR151510	1/2 x 3/8	15 x 10	26	26
GMTR20208	3/4 x 1/4	20 x 8	26	27
GMTR202010	3/4 x 3/8	20 x 10	28	28
GMTR202015	3/4 x 1/2	20 x 15	30	31
GMTR25258	1 x 1/4	25 x 8	28	31
GMTR252510	1 x 3/8	25 x 10	30	32
GMTR252515	1 x 1/2	25 x 15	32	34
GMTR252520	1 x 3/4	25 x 20	35	36
GMTR323210	1 1/4 x 3/8	32 x 10	32	36
GMTR323215	1 1/4 x 1/2	32 x 15	32	38
GMTR323220	1 1/4 x 3/4	32 x 20	36	41
GMTR323225	1 1/4 x 1	32 x 25	40	42
GMTR404010	1 1/2 x 3/8	40 x 10	34	39
GMTR404015	1 1/2 x 1/2	40 x 15	36	42
GMTR404020	1 1/2 x 3/4	40 x 20	38	44
GMTR404025	1 1/2 x 1	40 x 25	42	46
GMTR404032	1 1/2 x 1 1/4	40 x 32	46	48
GMTR505010	2 x 3/8	50 x 10	36	46
GMTR505015	2 x 1/2	50 x 15	38	48
GMTR505020	2 x 3/4	50 x 20	40	50
GMTR505025	2 x 1	50 x 25	44	52
GMTR505032	2 x 1 1/4	50 x 32	48	54
GMTR505040	2 x 1 1/2	50 x 40	52	55
GMTR656515	2 1/2 x 1/2	65 x 15	40	56
GMTR656520	2 1/2 x 3/4	65 x 20	43	57
GMTR656525	2 1/2 x 1	65 x 25	47	60
GMTR656532	2 1/2 x 1 1/4	65 x 32	52	62
GMTR656540	2 1/2 x 1 1/2	65 x 40	55	63
GMTR656550	2 1/2 x 2	65 x 50	61	66
GMTR808015	3 x 1/2	80 x 15	42	64
GMTR808020	3 x 3/4	80 x 20	45	65
GMTR808025	3 x 1	80 x 25	51	67
GMTR808032	3 x 1 1/4	80 x 32	55	70
GMTR808040	3 x 1 1/2	80 x 40	58	71
GMTR808050	3 x 2	80 x 50	64	73
GMTR808065	3 x 2 1/2	80 x 65	72	76



Material:

BS EN 1562 - Malleable Iron

Threads:

BSPT

Sizes Available:

1/8" - 6"

Working Pressure:

PN16



FQ CODE	SIZE Inch	SIZE	Dimensions A (mm)	Dimensions B (mm)
		mm		
GMTR10010015	4 x 1/2	100 x 15	50	79
GMTR10010020	4 x 3/4	100 x 20	53	79
GMTR10010025	4 x 1	100 x 25	56	81
GMTR10010032	4 x 1 1/4	100 x 32	60	84
GMTR10010040	4 x 1 1/2	100 x 40	61	84
GMTR10010050	4 x 2	100 x 50	70	86
GMTR10010065	4 x 2 1/2	100 x 65	84	92
GMTR10010080	4 x 3	100 x 80	82	90
GMTR15015050	6 x 2	150 x 50	75	115
GMTR15015080	6 x	150 x 80	92.5	120.5
GMTR150150100	6 x 4	150 x 100	105	125.5

